

2  
0  
1  
7

# SERENBE

DESIGNER SHOWHOUSE



## The Manor at Mado

Presented by *Atlanta Homes & Lifestyles*

SEPTEMBER 14 –  
OCTOBER 8, 2017

[serenbeshowhouse.com](http://serenbeshowhouse.com)



# TABLE OF CONTENTS

General Information + Tickets.....	6
Sponsors.....	8
Group Packages + Private Tours.....	8
Opening Night Preview Party.....	12
Shops at Serenbe.....	14
Dine at Serenbe.....	15
Special Events.....	16
About Serenbe.....	18
Letter from the Founders.....	19
Master Plan.....	19
The Arts at Serenbe .....	20
About the Art Farm.....	22
About the Architect + Builder.....	24
Floor Plans.....	26
Designers.....	28



The Serenbe Designer Showhouse program is produced by *Atlanta Homes & Lifestyles* magazine, 1117 Perimeter Center West, Ste. N118, Atlanta, GA 30338. [atlantahomesmag.com](http://atlantahomesmag.com)

Advertising inquiries should be directed to Publisher Gina Christman, (404) 965-4414.



**Rhinehart Pulliam & Company**

Architecture & Design

[rhinehart-pulliam.com](http://rhinehart-pulliam.com)

404.308.0439

Designers of the Atlanta Homes & Lifestyles  
2017 Serenbe Showhouse




# ANTIQUES AT THE GARDENS



**October 5-8 | 2017**

PRESENTED BY  **REGIONS**

**[BBGARDENS.ORG/ANTIQUES](http://BBGARDENS.ORG/ANTIQUES) OR 205.414.3950**

 BIRMINGHAMBOTANICALGARDENS  BBGARDENS  BBGARDENS

PROVIDING FREE SCIENCE EDUCATION AT BIRMINGHAM BOTANICAL GARDENS

2017 | SERENBE  
DESIGNER SHOWHOUSE

September 14–October 8, 2017



showhouse hours  
Thursday–Sunday, 10 a.m.–5 p.m.

\*Private group tours of 10+ available  
Monday–Wednesday by appointment.  
Email [showhouse@serenbe.com](mailto:showhouse@serenbe.com)

## tickets

Showhouse Admission, \$20

\*Tickets available online at  
[serenbeshowhouse.com](http://serenbeshowhouse.com) and on-site.

## proceeds

All net proceeds from the 2017 Serenbe Designer Showhouse will support the Art Farm, a vibrant artist complex that provides a place for engagement and inspiration. The Art Farm is a champion of the arts and provides a forum for dialogue around arts and culture by bringing people together with the belief that art in everyday life can create a greater understanding of the world. To learn more, please visit [artfarmatserenbe.com](http://artfarmatserenbe.com).

## parking

Parking for the AH&L Serenbe Designer Showhouse is in Serenbe's newest neighborhood, Mado.

## directions

Serenbe is located in beautiful Chattahoochee Hills, only 25 minutes southwest of the Atlanta airport.

Enter the Serenbe community from Atlanta-Newnan Road, turning onto Selborne Lane. Once you pass the Stables and turn left onto Tabb Way, then follow the signs for Showhouse parking. Detailed turn-by-turn directions can be found at [serenbe.com/contact](http://serenbe.com/contact).

Or take Lyft to Serenbe and get a ride back with their convenient showhouse pickup.

# GROUP PACKAGES



Grab a group of friends and head to Serenbe to tour the 2017 *Atlanta Homes & Lifestyles* Serenbe Designer Showhouse. Groups of 10+ receive 25 percent off Showhouse tickets and can book a private lunch at The Farmhouse or a customized wine tasting with the General Store. Group tickets available any day with private group tours offered Monday – Wednesday.

## Showhouse Hours

Thursday - Sunday, from 10 a.m.–5 p.m.

## Private Tours

Available Monday–Wednesday for groups of 10 or more with advance notice.

## Custom Packages

Available for different group sizes. For group tours + packages and questions, please contact [showhouse@serenbe.com](mailto:showhouse@serenbe.com).

*Note: 48 hours advance notice for private tours Monday–Wednesday and one week notice for lunch at The Farmhouse or wine tasting.*

# SHOWHOUSE SPONSORS

presenting sponsors



supporting sponsors



hospitality sponsors



arts sponsor

industry sponsor



contributing sponsors





# OPENING NIGHT PREVIEW PARTY

Thursday, Sept 14, 7-10 p.m.

Join us for cocktails, hors d'oeuvres, music, art and design as we celebrate the opening of the 2017 *Atlanta Homes & Lifestyles* Serenbe Designer Showhouse. Be among the first to tour The Manor at Mado and enjoy European style in a country setting. The event begins at 7 p.m. on the cobblestones of Anders Court where you will meet the Showhouse designers and enjoy the cascading garden courtyards of the The Manor.

\*Tickets to the Opening Night Preview Party are \$65 until September 1, then increase to \$75.

Purchase tickets at [serenbeshowhouse.com](http://serenbeshowhouse.com).



## SHOPS AT SERENBE

*With unique boutiques, a general store, home décor purveyors, independent bookstore, floral boutique and more, Serenbe offers plenty of places beyond the Showhouse to explore, not to mention award-winning restaurants. Wander before or after you see the Showhouse, but either way, don't miss out on all Serenbe has to offer.*

### THE BALLOG

[theballog.com](http://theballog.com)

Artisan goods | 9077 Selborne Lane

### BAMBOO JUICES

[Bamboojuices.com](http://Bamboojuices.com)

Cold pressed juice available at The Blue Eyed Daisy and General Store

### BLUE EYED DAISY

[blueeyeddaisy.com](http://blueeyeddaisy.com)

Bakeshop & Café | 9065 Selborne Lane

### COMBS & COLLARS

[combsandcollars.com](http://combsandcollars.com)

Pet Boutique | 9057 Selborne Lane

### ELITE FITNESS

[Facebook.com/EliteFitnessAtSerenbe](https://www.facebook.com/EliteFitnessAtSerenbe)

Gym & Fitness Center  
9110 Selborne Way

### THE FARMHOUSE AT SERENBE

[serenbefarmhouse.com](http://serenbefarmhouse.com)

Restaurant | 10950 Hutcheson Ferry Rd

### FORAGE & FLOWER

[Forageandflower.com](http://Forageandflower.com)

Floral and botanical boutique  
9206 Selborne Lane

### GAULT DESIGNS

[gaultdesigns.com](http://gaultdesigns.com)

Furniture | 10551 Serenbe Lane

### THE GENERAL STORE AT SERENBE

[generalstoreatserenbe.com](http://generalstoreatserenbe.com)

Grocery and More | 10642 Serenbe Lane

### THE HIL

[the-hil.com](http://the-hil.com)

Restaurant | 9110 Selborne Lane

### HILLS & HAMLETS BOOKSHOP

[Hillsandhamlets.com](http://Hillsandhamlets.com)

Bookstore | 10625 Serenbe Lane

### HONEYCOMB CONSIGNMENT

[facebook.com/HoneycombConsignment](https://www.facebook.com/HoneycombConsignment)

Womens Consignment Store  
9110 Selborne Lane

### THE INN AT SERENBE

[serenbeinn.com](http://serenbeinn.com)

Inn | 10950 Hutcheson Ferry Road

### LITTLE BARN APOTHECARY

[Littlebarnapothecary.com](http://Littlebarnapothecary.com)

Skin Care Boutique | 9131 Selborne Lane

### PEACHTREE BIKES

[peachtreebikes.com](http://peachtreebikes.com)

Bike Shop & Rentals | 9222 Selborne Lane

### PROPER HAIR

[properhair.com](http://properhair.com)

Hair Salon | 9059 Selborne Lane

### R. CARTWRIGHT DESIGNS

[Rcartwrightdesign.com](http://Rcartwrightdesign.com)

Interior Furnishing Boutique  
10625 Serenbe Lane

### RESOURCE

[resourceserenbe.com](http://resourceserenbe.com)

Gifts, Jewelry and Home Decor  
9110 Selborne Lane



CONTINUED:

**SERENBE FARMERS & ARTISAN MARKET**

*facebook.com/SerenbeMarket*  
 Farmers & Artisan Market,  
 Cooking Demos & Live Music  
 Selborne Green, 9110 Selborne Lane

**SERENBE FARMS**

*serenbefarms.com*  
 Organic Farm | 8457 Atlanta Newnan Road

**SERENBE REAL ESTATE OFFICE**

*serenberealestate.com*  
 Real Estate | 9055 Selborne Lane

**SERENBE STABLES**

*serenbestables.org*  
 Riding lessons, boarding and birthday parties  
 9237 Selborne Lane

**SERENBE TRAIL RIDING**

*serenbetrailriding.com*  
 Horseback Riding  
 10950 Hutcheson Ferry Road

**SERENBE YOGA**

*serenbeyoga.com*  
 Yoga, pilates and private sessions  
 9133 Selborne Lane

**SPA AT SERENBE**

*spaatserenbe.com*  
 Spa | 9135 Selborne Lane

---

# DINE AT SERENBE

---



**THE FARMHOUSE**

Lunch | Saturday & Sunday, 11:30 a.m. – 3 p.m.  
 Dinner | Wednesday–Sunday, 6 – 9 p.m.

Happy Hour | Every day, 4 – 6 p.m

*\*Private groups of 10 or more guests can reserve lunch Monday-Friday, please contact showhouse@serenbe.com for details. (Must provide seven days advance notice)*

**THE HIL**

Tuesday | 5 – 9 p.m.  
 Wednesday – Friday | 11 a.m. – 2 p.m. & 5 – 9 p.m.  
 Saturday & Sunday | 11 a.m. – 9 p.m.

**THE BLUE EYED DAISY**

Monday & Tuesday | 7 a.m. – 9 p.m.  
 Wednesday & Thursday | 7 a.m. – 4 p.m.  
 Friday | 7 a.m. – 9 p.m.  
 Saturday & Sunday | 7 a.m. – 6 p.m.



# SPECIAL EVENTS

---

## **SWOOX POP-UP SHOP**

*Open during showhouse hours*

## **WINE TASTING**

*Sundays; 3:30 p.m. • General Store*

## **FARMERS MARKET**

*Saturdays; 9 a.m. • Selborne*

## **SERENBE WALKING TOUR**

*Saturdays; 10:30 a.m. • Selborne Green*

## **OPENING NIGHT PREVIEW PARTY**

*Thursday, September 14 at 7 p.m.*

\$65 per person through September 1, then \$75

Join us in the bucolic Serenbe community to celebrate the opening of the fourth annual Atlanta Homes & Lifestyles Serenbe Designer Showhouse with cocktails, bites and live music.

## **FLORAL WORKSHOPS: SUCCULENT & CACTUS**

*Saturday, September 16 • Forage & Flower*

## **ART OVER DINNER: KIKI SLAUGHTER & SALLY KING BENEDICT**

*Sunday, September 17; 6 p.m. • Art Farm*

## **SERENBE FOODS POP-UP DINNER**

*Sunday, Sept 24; 6 p.m. • Surprise Location*

## **SERENBE PLAYHOUSE SLEEPY HOLLOW EXPERIENCE**

*Wednesday–Sunday; September 28–November 5*

*8 p.m. • The Horseman's Meadow*

## **LIVING WITH ART: A CONVERSATION WITH ARTSATL**

*Saturday, Sept 30; 2 p.m. • Grange Hall*

## **AIR SERENBE 4TH ANNUAL HOME TOUR**

*Sunday October 1; 1–5 p.m.*

## **RIGHT OFF THE FARM COOKING CLASS**

*Sunday October 1; 2 p.m. • Grange Hall*

## **ART OVER DINNER: WONDERROOT & CHRIS APPLETON**

*Sunday October 1; 6 p.m. • Art Farm*

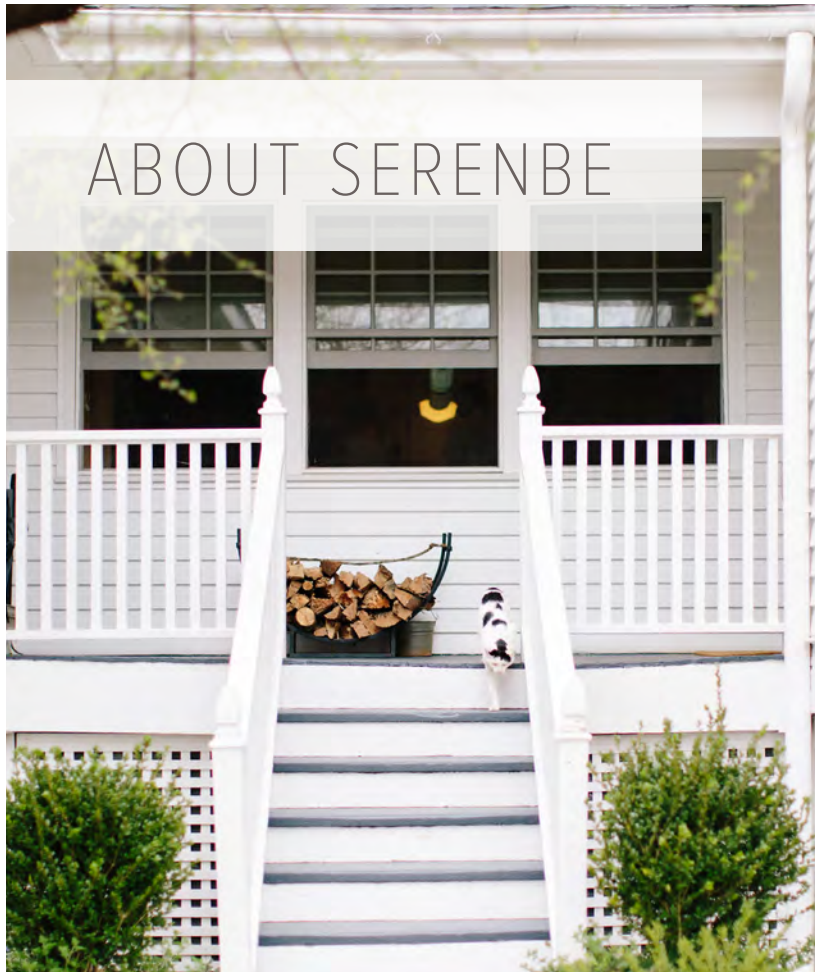
## **FLORAL WORKSHOPS: SUCCULENT & CACTUS**

*Saturday, Oct 7 • Forage & Flower*

*\*Scheduled events confirmed at the time of printing.*

*Please check [serenbe.com/events](http://serenbe.com/events) for new and updated listings and to purchase tickets for events.*





*“A neighborhood with fresh food and fresh air that makes well-being as natural as nature itself.”*

Serenbe is pioneering a new community model connected to nature on the edge of Atlanta. A neighborhood with fresh food and fresh air that makes wellbeing as natural as nature itself. A community where people live, work, learn and play in celebration of life’s beauty. Where connections between people, nature and the arts are nourished. Serenbe is set among acres of preserved forests and meadows with miles of nature trails connecting homes, restaurants, arts and businesses.

Serenbe’s architectural planning sets

a new standard for community living and engagement by remembering the past. Each of the neighborhoods have complementary commercial centers focused on the elements of a well-lived life: arts for inspiration, agriculture for nourishment, health for wellbeing and education for awareness.

Year-round cultural events include outdoor theater from Serenbe Playhouse, culinary workshops and festivals, music events, films and lectures, boutique shopping, art galleries, a spa and trail

riding, plus a robust artist residency program featuring open studios, performances and talks.

Fresh food is another of Serenbe’s natural assets, with a 25-acre organic farm, seasonal Saturday farmer’s market, thriving CSA program and edible landscaping, including blueberry bushes and fig trees along paths and sidewalks.

Serenbe is a place where you can come for the farmer’s market, enjoy a long weekend or stay for a lifetime.

# SERENBE

MASTER PLAN



A LETTER FROM

# SERENBE'S FOUNDERS



If you want to change the world, start in your own backyard. We discovered the property now known as Serenbe on a weekend outing to introduce our children to the Georgia countryside in 1991. Over the course of the next three years, we found that our time on the weekends and time together as family, brought us peace and serenity. So in 1994 we moved to the farm full time and stepped off the insatiable treadmill of life.

In 2000 we recognized the need to protect the woods and land that had become our home. That journey has led us to become placemakers, where we are rediscovering what it means to build community and create place, to think about life as a piece of art where we can bring beauty to the small moments in life.

It has always been extremely important to our family to celebrate the arts. From the whimsical lampposts in the Selborne neighborhood to the site-specific theater of Serenbe Playhouse, our goal is to integrate the arts into every aspect of life. We are excited to invite you to visit the 2017 Serenbe Designer Showhouse, and stay for a meal, a weekend or call Serenbe for a lifetime.

*marie & steve nygren*

# THE ARTS AT SERENBE



Glo Performance 2015



Art Over Dinner with Gregor Turk 2016

## serenbe institute

The Serenbe Institute for Art, Culture & the Environment exists to make Serenbe a community that passionately explores, embraces and expands the connections between nature, culture and the art of living. The Serenbe Institute develops, incubates, presents and facilitates a wide range of programs and events furthering its mission to cultivate our community's creative, intellectual and ecological qualities.

Today, the Institute supports the following programs at Serenbe: outdoor theatre with plays and musicals, artist residencies, modern ballet theatre, lectures, artist dialogues, a renowned fellows program, film screenings, photography, concerts, films in the wildflower meadow, theatre camps, education, visiting authors, playwrights and public art.

Since its inception, the Institute has established and supports Serenbe Film, Serenbe Fellows, Serenbe Playhouse, AIR Serenbe and most recently Terminus Modern Ballet Theatre.

### AIR SERENBE

AIR Serenbe promotes the creative process by providing artists of the highest caliber uninterrupted time and space and a welcoming community in which to create. *Learn more at [airserenbe.com](http://airserenbe.com).*

### SERENBE PLAYHOUSE

Serenbe Playhouse is a professional theatre company committed to producing bold new works and reinvented classics that connect art, nature and community. *Learn more at [serenbeplayhouse.com](http://serenbeplayhouse.com).*

### SERENBE FILM

Serenbe Film brings together people who enjoy and appreciate films by providing special screenings, filmmaker discussions and one-of-a-kind film events. *Learn more at [serenbefilm.com](http://serenbefilm.com).*

### SERENBE FELLOWS

Serenbe Fellows brings cultural and environmental thought leaders and eminent scholars for short-term residencies, who through presentations, workshops and seminars interact with residents, neighbors and visitors.

### TERMINUS MODERN BALLET THEATRE

Terminus Modern Ballet Theatre is a collective of five principal dance artists creating a place of innovation and creative thinking. Through performance and contemporary storytelling, the company intends to expand conventional definitions of ballet and serve as a cultural terminus for the greater arts community.



## ABOUT THE BENEFICIARY

# THE ART FARM AT SERENBE

Serenbe was designed with the arts in mind, including the Art Farm, a 40-acre outdoor complex that serves as a central place for artists, the arts and culture at Serenbe. The Art Farm provides a physical space to ignite passion and imagination in nature and works in collaboration with the Serenbe Institute and other partners to amplify their work and makers. You will find AIR Serenbe programming artist residencies, Serenbe Playhouse using the space for outdoor theatre and Serenbe Film with pop-up screenings. Signature Art Farm events are monthly Art Over Dinners along with workshops, demos, yoga, music and arts happy hours.

*\*Learn more about the Art Farm + upcoming dinners and ticket information at [artfarmatserenbe.com/events](http://artfarmatserenbe.com/events)*

## ART OVER DINNER

Art Over Dinner is a series of intimate gatherings with artists and the organizations that support their work. We collaborate with chefs and farmers to create a seasonal meal that showcases winemakers and brewers, and invite our guest artists to spark the conversation at one long farm table on the outdoor deck of the Art Farm at Serenbe.

## WORKSHOPS & DEMOS

Throughout the year we hold several workshops and demos put on by a mixture of local and visiting artists, creatives and culture-makers. Stay in touch on our website, social media and email list to get the latest details.

# ART FARM DIRECTOR



Megan Schaeffer is the Art Farm Director. After receiving a Bachelor of Arts in Arts Management from the College of Charleston, Schaeffer completed the Sotheby's Institute of Fine Art intensive program on Gallery Management and Curatorial Studies. She was a founding team member of the Charleston, South Carolina chapter of Creative Mornings, a monthly breakfast lecture series focusing on leaders in the creative community. Her time as outreach coordinator for Artist & Craftsman Supply, an employee-owned art supply company, led to a love of art supplies and, more importantly, arts education.

Most recently, Schaeffer was the artist liaison and art resource coordinator for a prominent Atlanta art consulting firm. Since moving to Atlanta in 2015, she has worked with *ArtsATL*, an arts publication, on its programming and sponsorship and serves on the advisory board of ArtsNOW. She is driven by a passion to build creative communities and create meaningful opportunities for artists.

TOP SHOP STONE · NATURAL & MANUFACTURED STONE  
**VISIT OUR NEW SHOWROOM  
& FABRICATION CENTER**

*Now open in the West Midtown design district!*



GRANITE · MARBLE · QUARTZ · SOLID SURFACE · COUNTERTOPS  
1075 HUFF ROAD · ATLANTA 30318 · P: 770.568.8299 | *Design By Steve Mckenzie · Photo by Marc Mauldin*

# MEET THE ARCHITECT

RHINEHART PULLIAM & COMPANY  
*Edwin Rhinehart and Robert Pulliam*



Rhinehart Pulliam & Company is a multidisciplinary design firm practicing in the fields of architecture and town planning. Their interests lie between residential, commercial and civic architecture, practices that have been torn apart by poor development practices and contemporary urban design. Their goal is to design not only these types of buildings, but design their relationships to each other and to their settings. Rhinehart Pulliam & Company is based out of Atlanta and lead by architect Edwin Rhinehart, AIA, and designer Robert Pulliam. Although they have projects of all types and scales, from Florida to Arkansas, they are particularly excited to be designing their second Serenbe Designer Showhouse.

[rhinehart-pulliam.com](http://rhinehart-pulliam.com)

# MEET THE BUILDER

BOBBY WEBB  
*BCC Builders*



With years of industry experience, Bobby Webb of BCC Builders is a premier custom home builder in the Southeast. Achieving exceptional quality and building unique, energy-efficient and environmentally friendly homes is his passion. His firm specializes in providing many standard features that other builders consider upgrades. Webb's focus on enhancing the health and safety of his clients by achieving high-quality results and reducing environmental impact are his priorities. His focus on "building eco-friendly homes for healthy living" is the mission of the company and one that he values and lives by. Webb is a certified EarthCraft Home Builder and a member of the National Association of Home Builders (NAHB).

[bccbuilders.net](http://bccbuilders.net)

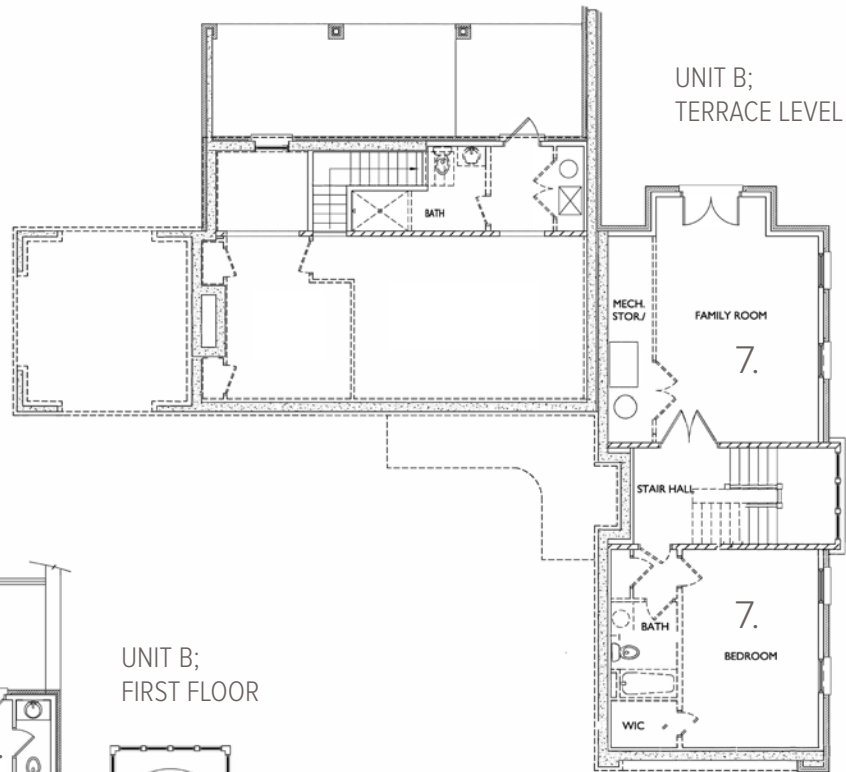
# FLOORPLANS

2017 Serenbe Designer Showhouse

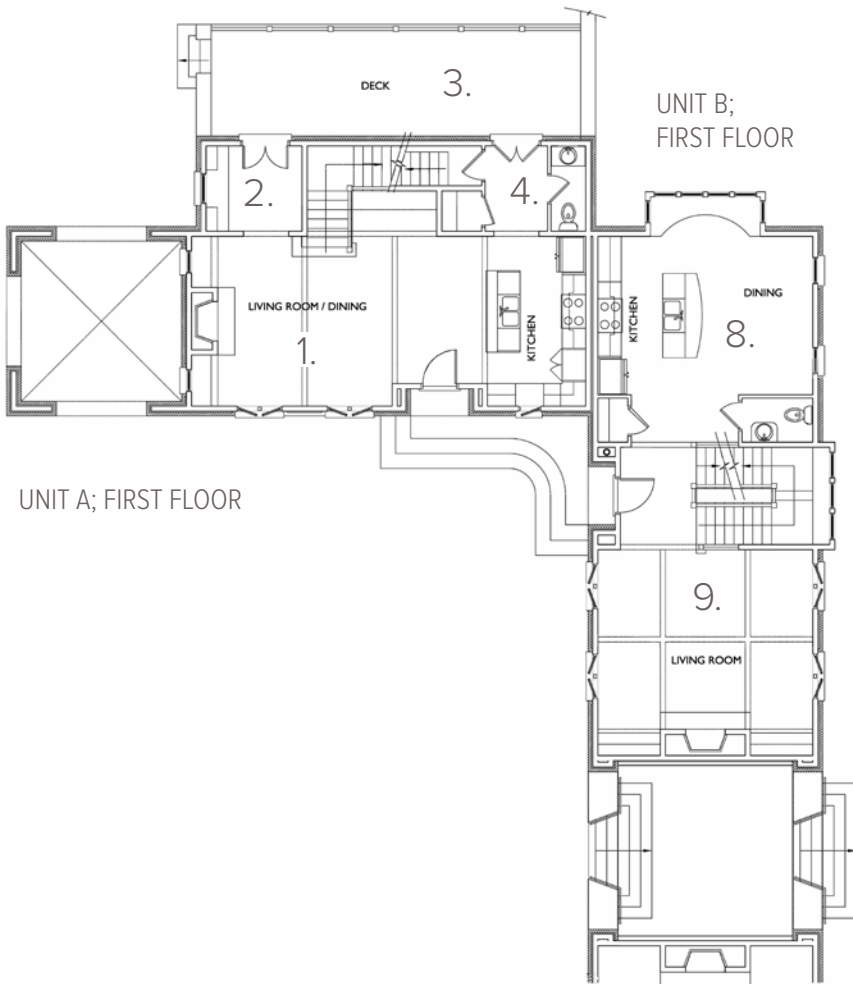
1. *Don Easterling and Nina Nash*  
Mathews Furniture + Design  
**Living & Dining Room**
2. *Anna Wooten,*  
A. Wooten Interiors  
**Office**
3. *Three Coins Cast*  
**Main-Floor Front Porch**
4. *Patrick and Meghan Sharp*  
Mister + Mrs. Sharp  
**Ground Floor Powder & Hall**

UNIT A; TERRACE LEVEL

UNIT B;  
TERRACE LEVEL



UNIT B;  
FIRST FLOOR



UNIT A; FIRST FLOOR

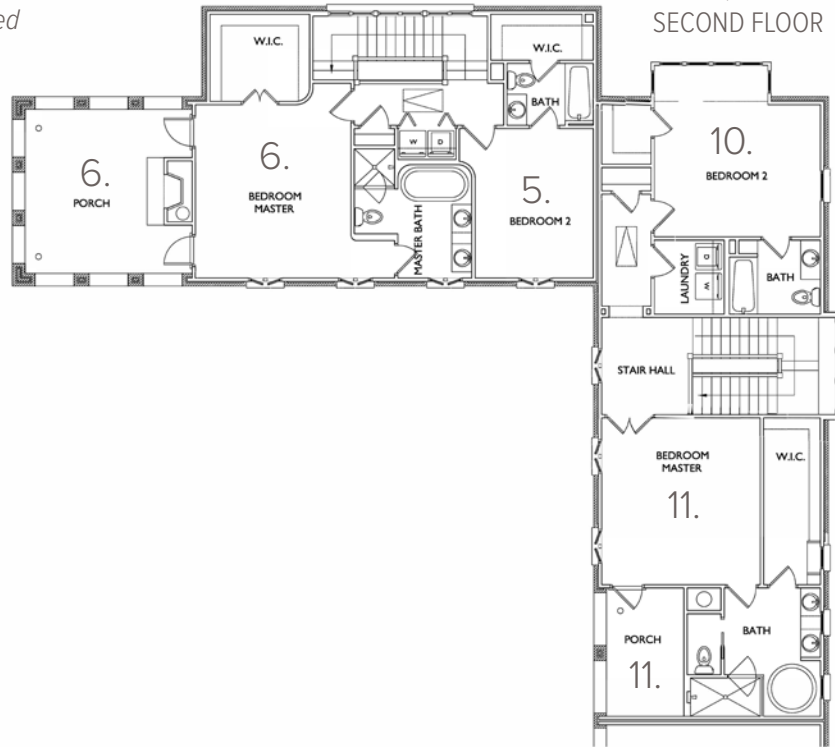
5. *Jennifer Healey*  
J. Healey Interiors  
**Bedroom 2 & Bath**
6. *Chris Holt*  
Holt Interiors  
**Master Bedroom,  
Bath & Porch**
7. *Jenn Balcos*  
Swoox  
**Terrace Bedroom,  
Bath & Family Room**
8. *Jena Salmon*  
Jena Salmon Designs  
**Kitchen/Dining Room**

# FLOORPLANS

2017 Serenbe Designer Showhouse, continued

UNIT A; SECOND FLOOR

UNIT B;  
SECOND FLOOR



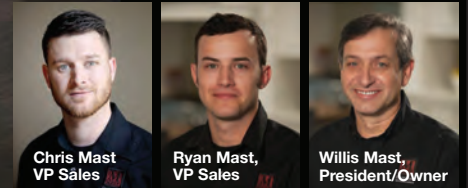
- 9. *Elizabeth Ferguson & David Frazier*  
Elizabeth Ferguson Design  
**Living Room**
- 10. *Julie Montgomery & Michele Gratch*  
Montgomery Gratch Interiors  
**Bedroom 2, Bath & Laundry**
- 11. *Teri Duffy*  
T. Duffy & Associates  
**Master Bedroom, Bath & Porch**

**MAST**  
CABINETRY, LLC  
— Est. 1999 —  
*50 Years of Amish Heritage*

SPECIALIZING IN CUSTOM AND SEMI CUSTOM CABINETRY AT AN AFFORDABLE PRICE



Call now to schedule a free consultation!  
**770-616-4423**  
[MastCustomCabinets.com](http://MastCustomCabinets.com)



**BUILT LOCAL AND DELIVERED IN FOUR WEEKS.**



# MEET THE DESIGNERS

2017 Serenbe Designer Showhouse



## OFFICE | ANNA WOOTEN

A. Wooten Interiors is a residential design studio based in Atlanta, Georgia. Anna Wooten generates a fresh, personalized take on classic interiors. She strives to create casual, comfortable spaces that are as functional as they are elegant. Wooten graduated from North Carolina State University's College of Textiles before moving to Atlanta in 2010, where she worked for Amy Morris Interiors. While working for the firm and taking additional classes at the Art Institute of Atlanta, Wooten continued to hone her eye for all things fabric and their inimitable properties. In 2016, she started A. Wooten Interiors and has been working independently on residential projects up and down the east coast. *A. Wooten Interiors // [awooteninteriors.com](http://awooteninteriors.com)*



## MASTER BEDROOM & BATH | CHRIS HOLT

Chris Holt, a native of Tuscaloosa, Alabama, began his studies at the Savannah College of Art and Design and finished with a Bachelor of Science in Interior Design from the University of Alabama. After working in the Interior Design field for more than 10 years, he opened Holt Interiors in 2001, focusing on commercial and residential design. Holt Interiors' style is traditional and classic but with a fresh sensibility. Holt integrates this design theory into every project, while keeping the client's specific needs and expectations at the forefront. He is currently working on projects in Georgia, New Orleans, Florida and Scotland. *Holt Interiors // [holt-interiors.com](http://holt-interiors.com)*



## LIVING ROOM | ELIZABETH FERGUSON & DAVID FRAZIER

Elizabeth Ferguson Design was founded by Elizabeth Buffy Ferguson, who was born and raised in Newnan, Georgia. During her husband's time as mayor of West Point, Georgia, Ferguson was instrumental in the urban redevelopment of their town. As the designer for the West Point Downtown Development Authority, she helped reshape and change the face of West Point. David Frazier is an architectural and interior designer based in New York City. He received a degree in architecture from Auburn University and is an alumna of the internationally acclaimed Rural Studio, where he designed and built a town hall in Newbern, Alabama. Prior to starting his own firm, Frazier worked for Meyer Davis Studio in New York as a Senior Project Manager and for Benjamin Vandiver as studio director. *Elizabeth Ferguson Design // [elizabethfergusondesign.com](http://elizabethfergusondesign.com); David Frazier // [davidfrazier.co](http://davidfrazier.co)*

#### KITCHEN/DINING | JENA SALMON

Jena Salmon Designs, LLC, Allied ASID, is a full-service interior design firm specializing in transitional design that is fresh, clean and classic. Over the years, Salmon's talent for creating stylish spaces has evolved into her own brand of decorating, garnering her praise from national media as well as her clients. Known for her fresh take on traditional style, Salmon's work can only be characterized by timelessness and her "keep it pretty" mantra. Salmon's style combines old-world elegance with a modern sensibility, resulting in her fearless iconic style. She has a unique ability to perfectly combine bold patterns, Chinoiserie and classic influences with an impeccable sense of color. *Jena Salmon Designs // jenasalmon.com*



#### BEDROOM 2 & BATH | JENNIFER HEALEY

Based in Atlanta, Georgia, J. Healey Interiors is a full-service residential design firm specializing in comfortably elegant and classic spaces that are detailed yet edited. Healey loves juxtaposing timeless antiques with more current fabrics and accessories. Often inspired by art, she enjoys how personal the selection is and how it elevates a room or establishes the mood. She works closely with her clients to create homes that are unique to their lifestyle and reflect their personality. Healey's work has been featured in *Atlanta Homes & Lifestyles*, *Southern Living*, and *The Atlanta-Journal Constitution*. She lives in Ardmore Park with her husband, two teenage children and their wirehaired dachshund. *J. Healey Interiors // jhealeyinteriors.com*



#### LIVING & DINING ROOM | DON EASTERLING & NINA NASH

For over 10 years, partners Don Easterling and Nina Nash have brought their passion for design and vibrant chemistry together to create remarkable interiors in Atlanta and beyond. Their collaboration highlights each other's styles and strengths. Easterling, with over 20 years of experience, leans towards traditional practicality. His strong knowledge for architecture brings an understanding that makes him one of the best in the business. Nash's influence is more edgy, with her expertise drawn from her natural eye and love of fashion, travel and the arts. Together at Mathews Furniture + Design they create the perfect balance, producing interiors that are gorgeous and livable. Their work has been featured in numerous publications as well as design and style blogs. *Mathew Furniture + Design // mathewsfurniture.com*



# MEET THE DESIGNERS

2017 Serenbe Designer Showhouse



## BATH & LAUNDRY | JULIE MONTGOMERY & MICHELE GRATCH

Atlanta-based interior designers Julie Montgomery and Michele Gratch merged their respective design firms in 2017 to form Montgomery Gratch Interiors, LLC. With full residential design services including decorating, renovations and new construction, aligned with a vast library of resources and industry partners, Montgomery Gratch Interiors creates timeless design infused with personality for functional, beautiful living. Both women count the unveiling of a client's designed space as their ultimate professional joy. *Montgomery Gratch Interiors // [montgomerygratch.com](http://montgomerygratch.com)*



## GROUND FLOOR POWDER | PATRICK & MEGHAN SHARP

Patrick and Meghan Sharp are a husband-and-wife design team with a focus on modern, well-edited residential and commercial spaces. With 20 years in corporate visual merchandising and 10 years of home organization and design experience, they bring a refined design sense to every project. Patrick and Meghan infuse their projects with the philosophy that everyone can have a functional and beautiful home to help them nest and flourish. The Sharp's are also working on the Serenbe Swim Club slated for Spring 2018 and several other projects in and around Atlanta. The work of Mister + Mrs. Sharp has been featured in various shelter media outlets including *Design Milk* and the Design is Human Modern Architecture Tour. *Mister + Mrs. Sharp, LLC // [misterandmrssharp.com](http://misterandmrssharp.com)*



## TERRACE BEDROOM, BATH & FAMILY ROOM | JENN BALCOS

Jenn Balcos, leading interior stylist and partner of SWOOX Curated Consignment, utilizes her eclectic background in fashion, theater and interior design to create distinct interiors reflecting her unique aptitude for blending the old with the new. As partners of SWOOX, Balcos and Kelly Wolf Anthony (owner of Wolf Design Group) share a passion for sharing an affordable luxury lifestyle by opening a high style consignment shop that appeals to both interior designers and consumers. Balcos believes in blending antiques, original art or even flea market finds to create a comfortable, chic and sometimes unexpected living space. *SWOOX // [swooxatlanta.com](http://swooxatlanta.com)*

### MASTER BEDROOM, BATH & PORCH | TERI DUFFY

T. Duffy & Associates has consistently been recognized for exceptional design ideas and expressing creativity that goes beyond the borders. They believe that everyone's home should manifest their personality. T. Duffy & Associates actively collaborates with architects to gain a classically eclectic design that is timeless with extraordinary attention to detail. The interiors reflect the aspirations and personalities of each client, and no two jobs are the same. Teri Duffy received her Bachelor of Fine Arts Degree in interior design from Arizona State University. She has received multiple ASID awards and has specialized in high-end residential projects for the past 30 years. *T. Duffy & Associates // [tduffyandassociates.com](http://tduffyandassociates.com)*



### MAIN-FLOOR FRONT PORCH | THREE COINS CAST

*with Kolo Collection & Sunbrella*

Three Coins Cast is a second-generation family company that was formed in 1989. Their American-made, solid-cast aluminum product is welded, prepped, painted and hand finished at their facility in Newnan, Georgia. Three Coins Cast offers a wide array of casual outdoor furniture, statuary and garden accents that are designed with classic beauty, durability and function. Cast from 100% recycled aluminum, each piece is fully welded and constructed with reliability and longevity in mind. A proud licensee of George Washington's Mount Vernon, Three Coins Cast has made a niche for itself by offering custom colors and pieces, unique designs, and providing unparalleled customer service. *Three Coins Cast // [threecoins.com](http://threecoins.com)*



For up-to-date information or to purchase tickets, visit  
**SERENBESHOWHOUSE.COM**

**2017 SERENBE DESIGNER SHOWHOUSE**

*Presented by Atlanta Homes & Lifestyles*